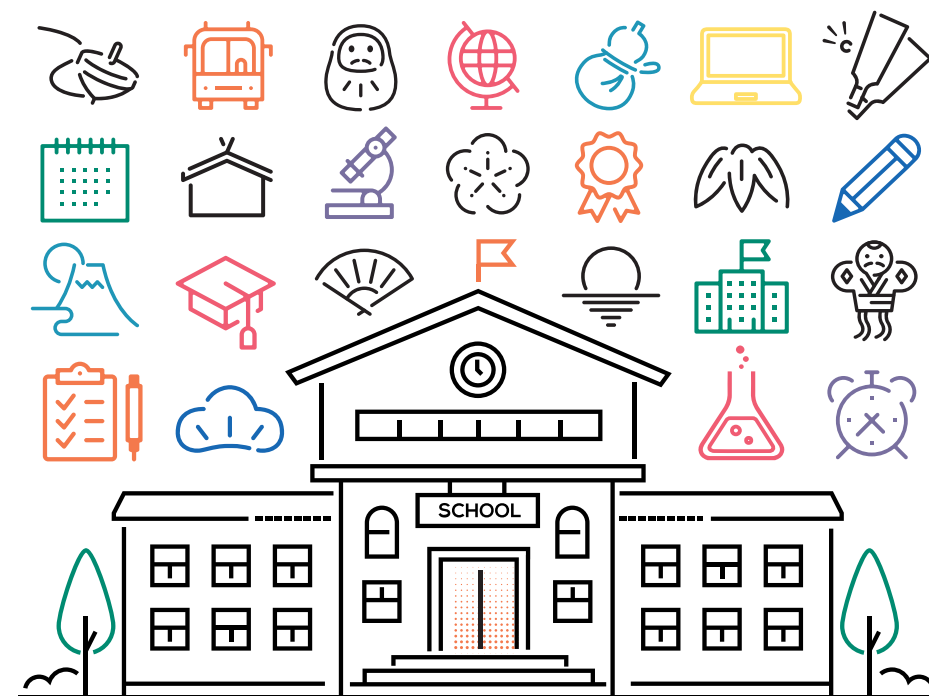


English

# STUDY IN JAPAN

////// **Basic Guide** ////

[www.studyinjapan.go.jp](http://www.studyinjapan.go.jp)



 Independent Administrative Institution  
Japan Student Services  
Organization

 **STUDY in JAPAN**

## 10 QUICK FACTS ABOUT JAPAN

Japanese Nobel Prize winners

27



Financial contribution to the UN

3<sup>rd</sup>



International students studying in Japan

approx.

300,000



Gross national income

3<sup>rd</sup>



Japanese universities in top 1,000 of QS World University Rankings 2020

41



Number of industrial robots in operation

2<sup>nd</sup>



World Cultural and Natural Heritage sites

23



Global Peace Index

9<sup>th</sup>



Average life expectancy

1<sup>st</sup>



Number of exported automobiles

2<sup>nd</sup>



## Why Study in Japan?

Sado Tea Ceremony



In Japan, traditional culture, such as *sado*, *kabuki*, and *budo* coexist with pop culture like *manga* and *anime*.

Three Gassho-style houses with steep thatched roofs. (Shirakawago) ©Koichi\_Hayakawa



Japan has many mountains and is surrounded by oceans, so you can enjoy the dramatic changes in the natural scenery through spring, summer, fall, and winter.

### Culture



Yahiko-jinja Shrine Sumo Ring ©Yahikomura

### Nature



Arakurayama Sengen Park (Chureito Pagoda) ©Fujiyoshida City

### Safety



Tokyo Station ©Mitsunori Egawa

### Food



Sushi



The Shinkansen Bullet Train

Japan is an economically rich country with one of the lowest crime rates in the world. International students can relax and focus on their studies.

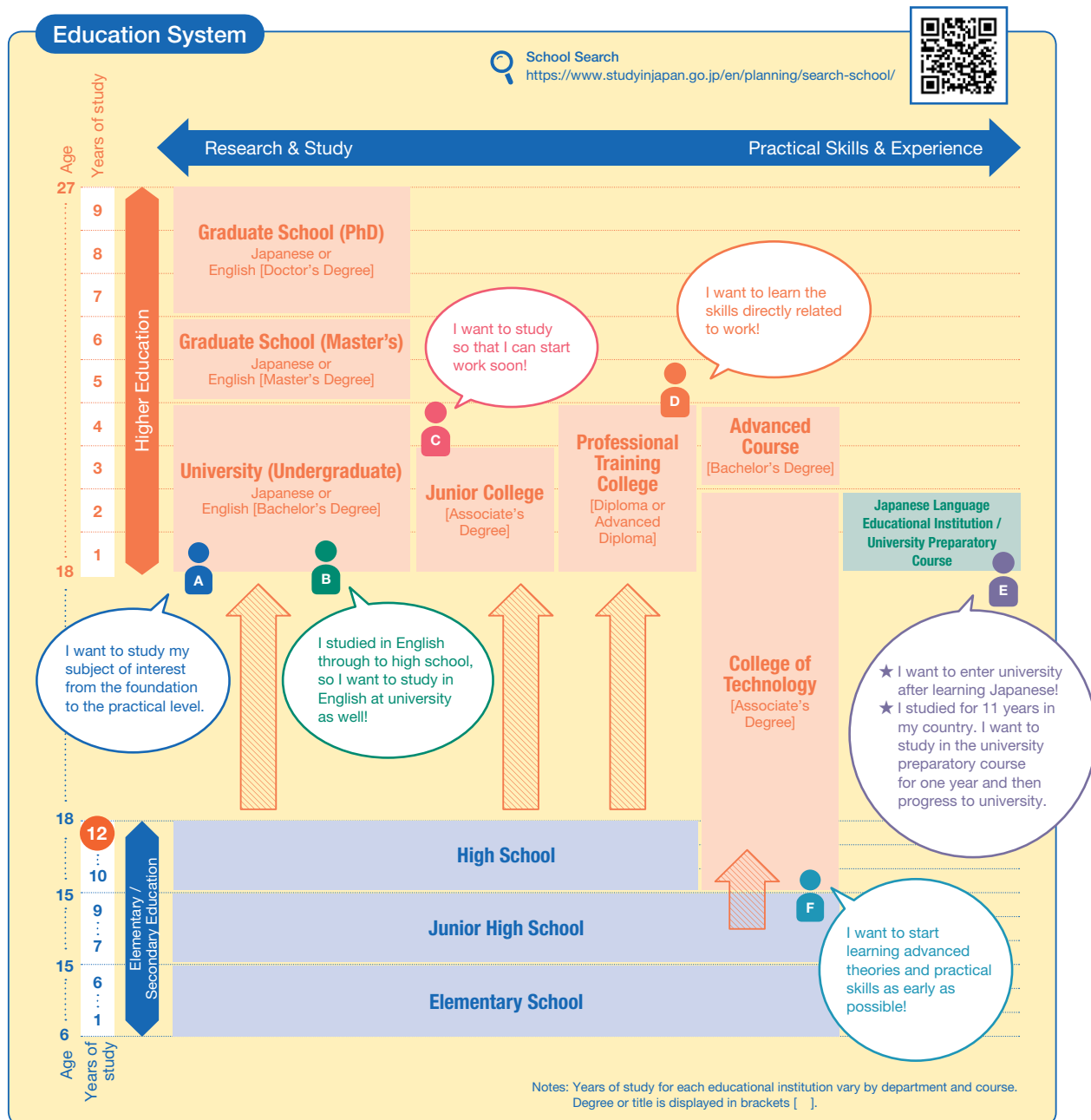
*Washoku*, the traditional dietary culture of the Japanese, is designated as an intangible cultural heritage by UNESCO, comprised of healthy and colorful ingredients selected based on the season. It is receiving a lot of attention worldwide.



Ramen Noodles

References: • Kids Ministry of Foreign Affairs, Various World Knowledge Ranking (<https://www.mofa.go.jp/mofai/kids/ranking/index.html>)  
 • Global Peace Index 2019  
 • UNESCO World Heritage List (<https://whc.unesco.org/en/list/>)  
 • The Summary of Result on an Annual Survey of International Students in Japan 2018 (JASSO)

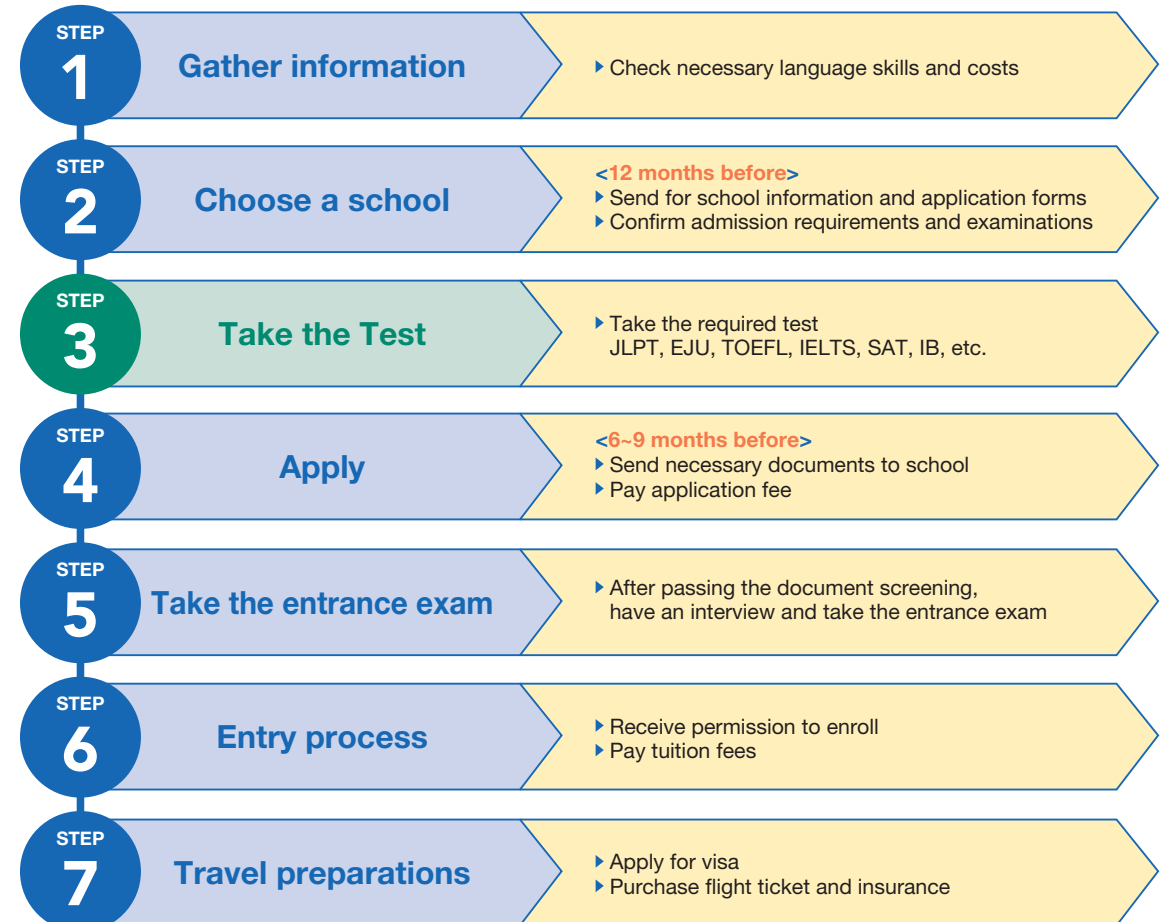
## Higher Education in Japan



- Higher education in Japan begins after six years of elementary, three years of junior high, and three years of high school (total 12 years).
- International students wishing to enter Japanese higher education **must complete 12 years of formal education**.
- Those with less than 12 years of formal education must first complete a one or two year university preparatory course before entering higher education.

## 7 Steps to Study in Japan

**START** Joining a university or professional training college as a regular student



**GOAL**

### About the EJU



Examination for Japanese University Admission for International Students (EJU)

A test to determine if students possess the Japanese language skills and basic academic abilities necessary to study at Japanese universities and other such higher educational institutions.

- ★ More than 50% of Japanese universities (90% of national universities) use EJU test results when screening applicants
- ★ Results are valid for two years
- ★ Applicants with excellent EJU results are promised Monbukagakusho Honors Scholarship for Privately-Financed International Students (p.7)
- ★ Test can be taken multiple times

#### • Schedule

Held twice a year (June and November)

#### • Location

Held in 14 countries and regions around the world!

EJU  
[https://www.jasso.go.jp/ryugaku/study\\_j/eju/index.html](https://www.jasso.go.jp/ryugaku/study_j/eju/index.html)







## Tuition & Living Expenses

### Tuition Fees

#### Approximate tuition fees for one year



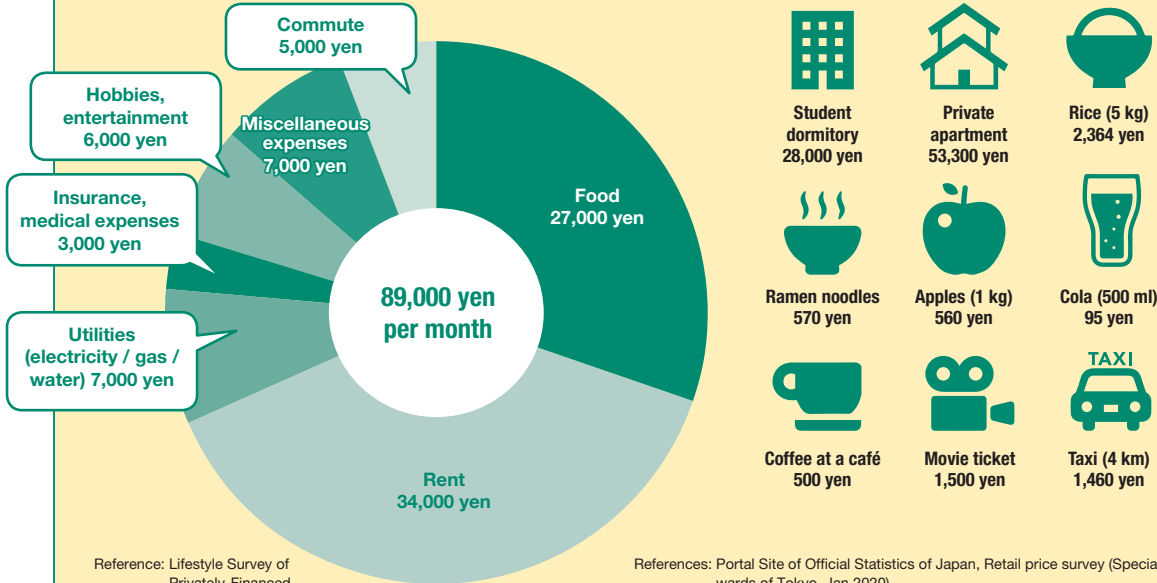
Notes: Excluding medical, dental and pharmaceutical departments.  
For the first year, additional fees for entry and other things must be paid separately.

Reference: Ministry of Education, Culture, Sports, Science and Technology, Survey of Fees and Contributions for Students on Private Universities, etc., 2018  
([https://www.mext.go.jp/a\\_menu/koutou/shinkou/07021403/1412031\\_00001.htm](https://www.mext.go.jp/a_menu/koutou/shinkou/07021403/1412031_00001.htm))

### Living Expenses

#### Guide for living expenses

Living expenses are more expensive in large cities. Example: 100,000 yen in Tokyo



Reference: Lifestyle Survey of Privately-Financed International Students 2017 (JASSO)

References: Portal Site of Official Statistics of Japan, Retail price survey (Special wards of Tokyo, Jan 2020)  
Dormitory expenses from Tokyo Japanese Language Education Center  
Private apartment expenses are for a 20 m<sup>2</sup> apartment

- Student dormitory 28,000 yen
- Private apartment 53,300 yen
- Rice (5 kg) 2,364 yen
- Ramen noodles 570 yen
- Apples (1 kg) 560 yen
- Cola (500 ml) 95 yen
- Coffee at a café 500 yen
- Movie ticket 1,500 yen
- Taxi (4 km) 1,460 yen

## Scholarships & Financial Aid

### Method 1 Apply for the scholarships granted by the Japanese Government

\* Amounts may vary by level. \*\* Amount for Japanese language school students

	MEXT Scholarship	Monbukagakusho Honors Scholarship for Privately-Financed International Students	Student Exchange Support Program (Scholarship for Short-term Study in Japan)
Amount of monthly support	From 117,000 yen*	48,000 yen or 30,000 yen**	80,000 yen
Tuition fee exemption	✓		
Free flight ticket	✓		
Free preparatory education	✓		
Payment period	Entire period of international study	One year or six months	While participating in program
Applicable students	Graduate, undergraduate, college of technology, professional training college, Japanese studies, and teacher training students	Graduate, undergraduate, college of technology, professional training college, and Japanese language students	Graduate, undergraduate, college of technology, and professional training college students studying in Japan for one year or less
Grade-based	✓	✓	✓
Household income-based		✓	✓
Screening process	Document screening, written examination, and interview	Document screening	Document screening
Number available	Unpublished	Around 7,000 students	Around 5,000 students

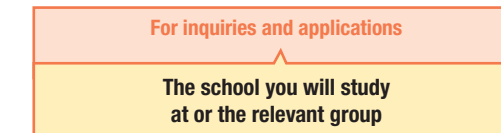


### Method 2

#### Apply to a local government or private foundation for a scholarship

- Apply after joining a school in Japan.
- There are many specifications for home country, school, and field of study.
- Available to a few to a few hundred students each year. Search from the site below.

Local government or private foundation scholarships  
<https://www.studyinJapan.go.jp/en/planning/by-style/pamphlet/>



### Method 3

#### Apply for an on-campus scholarship or use a tuition fee exemption / reduction system

##### For university X

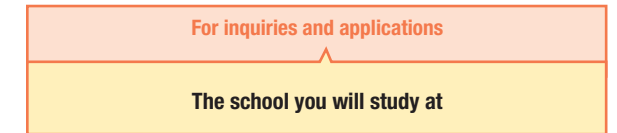
Tuition fee exemption (50% or 100%)

For .....  
Students with excellent grades who would have difficulty in paying fees for financial reasons

##### For university Y

82,000 yen per month scholarship (for four years)

For .....  
Students with excellent entrance examination results



### Working part-time as a student

People with a residency status of "Student" who apply for "Permission to Engage in Activity other than that Permitted by the Status of Residence Previously Granted," may engage in part-time work for up to 28 hours per week.



Be careful of international student agents who emphasize that you can "earn a lot of money as a student in Japan"!

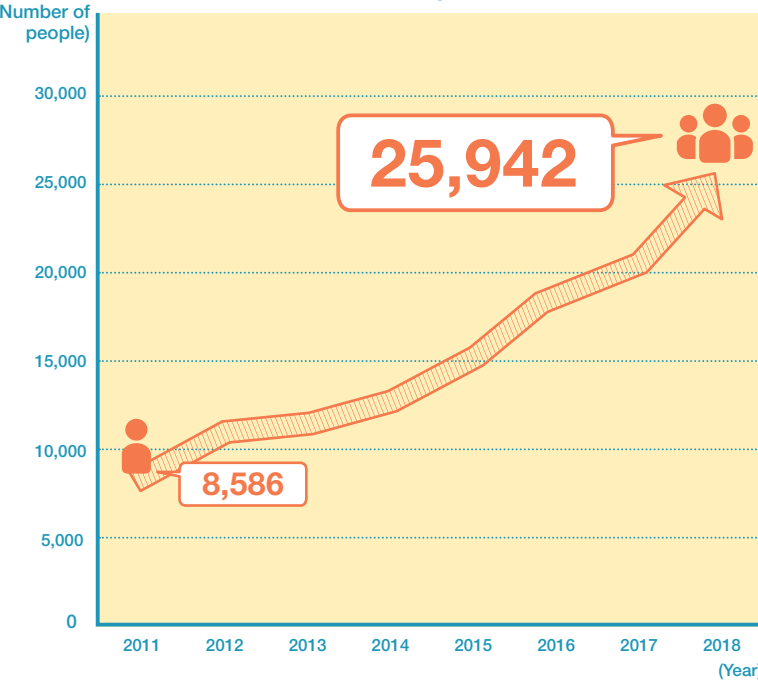


- You can receive 3,000 yen per hour. ❌ The average hourly wage is 900 yen.
- As an international student you can earn 300,000 yen a month. ❌ Students working part-time can expect to earn around 59,000 yen per month.

## Work in Japan

### From international student to employee

Number of people changing from "Student" resident status to one of the working resident statuses



### Top 10 occupations for international students

Rank	Job description
1	Translation and interpretation
2	Retail and sales
3	International business
4	Technological development (data processing)
5	International trade
6	Design
7	Technological development (outside data processing)
8	Public relations and advertising
9	Education
10	Accounting

Reference: "Employment status in Japanese firms of international students 2018" (Immigration Services Agency of Japan)

### Looking for work

Job hunting in Japan is quite unique. Therefore, it is essential that international students seeking employment begin preparations well in advance. Use the sites below to begin gathering information.

Job Hunting Guide for International Students (JASSO)  
[https://www.jasso.go.jp/en/study\\_j/job/guide.html](https://www.jasso.go.jp/en/study_j/job/guide.html)

Open for Professionals (JETRO)  
<https://www.jetro.go.jp/en/hrportal/>



## Interview



**Learn Japanese language and corporate culture to become a must-have employee!**

Austin

I came to Japan in 2012 and entered the University of Tokyo to study political science after completing a preparatory course. I now work as a freelance programmer. Although it depends on your chosen major, Japanese university offers a lot of freedom, and you can even take part in a variety of extracurricular activities such as internships. Additionally, thanks to the new graduate hiring system, Japan is the easiest country in which to shape your first career among advanced countries. To succeed in Japan, rather than becoming Japanese, you should make the most of your unique strengths as a foreigner. The language skills learned through studying and working in Japan as well as the understanding of this unique culture are sure to become irreplaceable strength. If you want to become a sought-after employee in this world of advancing globalization, I really recommend studying and working in Japan.

## Interview



**I want to bring Japan's civil engineering technology to Rwanda!**

Rumanzi Hypolite  
 NIT (KOSEN), Maizuru College

My country faces the problem that, even if we want to improve infrastructure, we lack skilled architects and engineers. Therefore I came to study in Japan, known for its high levels of education and engineering, so I can take my skills home and contribute to my country's development. I was worried about living in Japan and had a few troubles, but there was always someone around to help me out and I'm so grateful to them. Now I'm studying civil engineering at a college of technology and plan to advance to university, if possible going on to a master's degree. My dream is to create a construction company back home, and teach the skills and culture I learned in Japan to the younger generation.



**I could focus on my studies thanks to the scholarship!**

Ioannis Gkolfinopoulos  
 Tokyo Institute of Technology,  
 Graduate School of Civil Engineering  
 Master's Course

I think being free from financial worries while in Japan is the key to focusing on my research, so I applied for a MEXT scholarship. The amount of support and guidance given to students at Japanese universities is really impressive. On the other hand, the crush of the rush-hour commute is quite surprising! Japan is a unique country where tradition and technology coexist. I think westerners are likely to experience a lot of culture shock coming here, so learning about the language and culture is very important. The MEXT scholarship guarantees a smooth life as a student, so why not give it a try yourself.

## Q&A

**Q. I have attended a Japanese school. Can I apply to the international student entrance exam?**

**A.** Whether you can take the international student entrance exam or not is decided by the school. Those who have graduated from a Japanese high school, and those who hold both Japanese and another nationality should inquire about the entrance exam before applying to the school.

**Q. How should I look for and confirm the application period, necessary documents, and entrance examination?**

**A.** Details of the application process and entrance examination can be found on the school's website or admission guidelines. Once you have decided on a school, check their website or admission guidelines.

**Q. Please tell me about the process of entering graduate school.**

**A.** Check the entry requirements, create a research proposal, and confirm what documents need to be submitted. Generally, you must find an instructor yourself. Some institutions require you to have informal acceptance before application, so confirm this with your chosen institution as soon as possible.

**Q. Please tell me about the high school international exchange program and scholarship.**

**A.** The groups below offer support for high school international exchange.

- **AFS Intercultural Programs**  
 URL: <https://afs.org>  
 Note: Use the "Find AFS in your Country" function to inquire at your local office.
- **YOUTH FOR UNDERSTANDING**  
 URL: <http://yfu.or.jp>

## Study in Japan Fair

A rare chance to meet and speak with school staff in charge of the schools.

 Study in Japan Fair  
<https://www.studyinjapan.go.jp/en/other/event/>



[Host countries and regions]  
 Taiwan (Taipei, Kaohsiung), China (Hong Kong), Thailand (Chiang Mai, Bangkok), Korea (Seoul, Busan), Indonesia (Surabaya, Jakarta), China (Beijing, Shanghai), Vietnam (Ho Chi Minh, Hanoi), Malaysia (Penang, Kuala Lumpur)

Note: Planned as of April 2020



## Study in Japan website

Search by subject, medium of instruction, location and more to find your perfect school!

 Study in Japan website  
<https://www.studyinjapan.go.jp/en/>



## JASSO International Offices

At each of the five JASSO international offices, visit us in person, or contact us by telephone or email. We also have various reading materials regarding studying in Japan.



Jakarta Summitas Tower II, 2nd Floor Jalan Jenderal Sudirman Kav. 61-62, Jakarta 12190 INDONESIA  
 Tel : (+62) 21-252-1912  
 E-mail : info@jasso.or.id  
 Web : <http://www.jasso.or.id/>  
 Facebook : <https://www.facebook.com/JASSO.indonesia>



1016/3, 10F Serm-mit Tower, 159 Asok-Montri Rd., Bangkok 10110 THAILAND  
 Tel : (+66) 2-661-7057  
 E-mail : info@jeic-bangkok.org  
 Web : <https://www.jeic-bangkok.org/>  
 Facebook : <https://www.facebook.com/JASSO.Thailand>



4th Floor, CornerStone Building, 16 Phan Chu Trinh, Hoan Kiem, Hanoi, VIETNAM  
 Tel : (+84) 24-3710-0226  
 E-mail : info@jasso.org.vn  
 Web : <http://www.jasso.org.vn/>  
 Facebook : <https://www.facebook.com/JASSO.Vietnam>



#702 Garden Tower, 84 Yulgok-ro, Jongno-gu, Seoul 03131 REPUBLIC OF KOREA  
 Tel : (+82) 2-765-0141  
 E-mail : jasso@jasso.or.kr  
 Web : <http://www.jasso.or.kr/>  
 Facebook : <https://www.facebook.com/JASSO.Korea>



A-7-5, Northpoint Offices, Mid Valley City, No.1, Medan Syed Putra Utara, 59200 Kuala Lumpur, MALAYSIA  
 Tel : (+60) 3-2287-0812  
 E-mail : enquiry@studyinjapan.org.my  
 Web : <http://www.studyinjapan.org.my/>  
 Facebook : <https://www.facebook.com/JASSO.Malaysia>



We truly believe that everyone can find something worthwhile by studying in Japan.

Japan Student Services Organization (JASSO) provides the following support programs for international students

- Scholarship provision
- Running Examination for Japanese University Admission (for international students) (EJU)
- Collection and provision of information on studying abroad
- Japanese language education
- Housing support

[Edited and published by]

Independent Administrative Institution, Japan Student Services Organization (JASSO) Information Services Division, Student Exchange Department  
 2-2-1 Aomi, Koto-ku, Tokyo 135-8630  
 E-mail : infoja@jasso.go.jp  
 Tel : (+81) 3-5520-6111  
 Web : <https://www.studyinjapan.go.jp/ja/>

